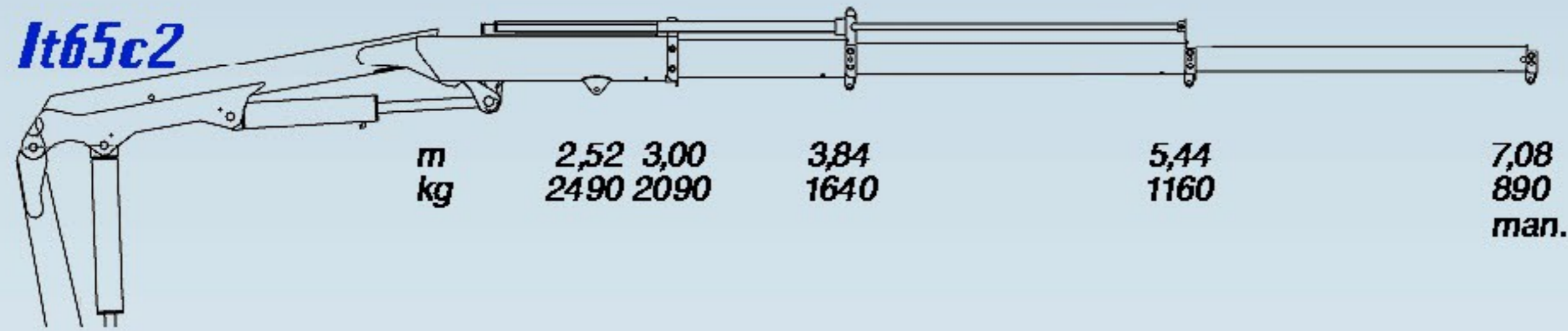


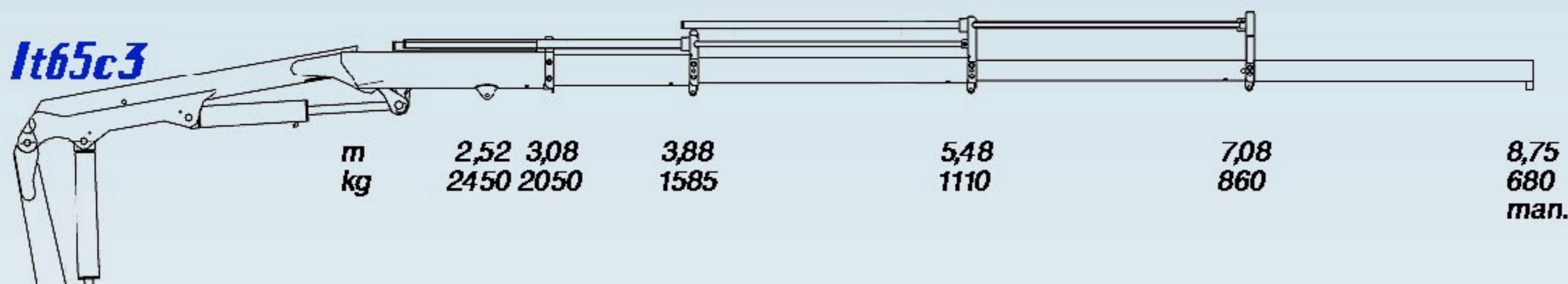
Irontech65c

Kurzarm 2,2m

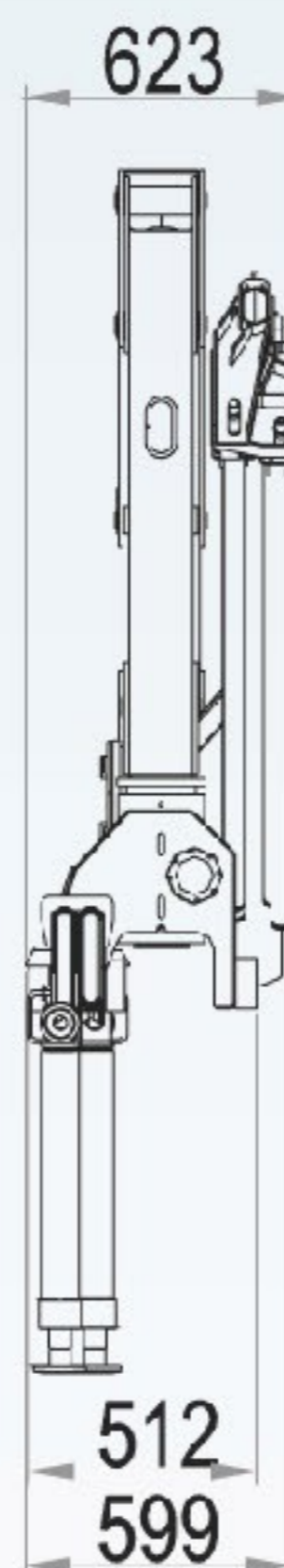
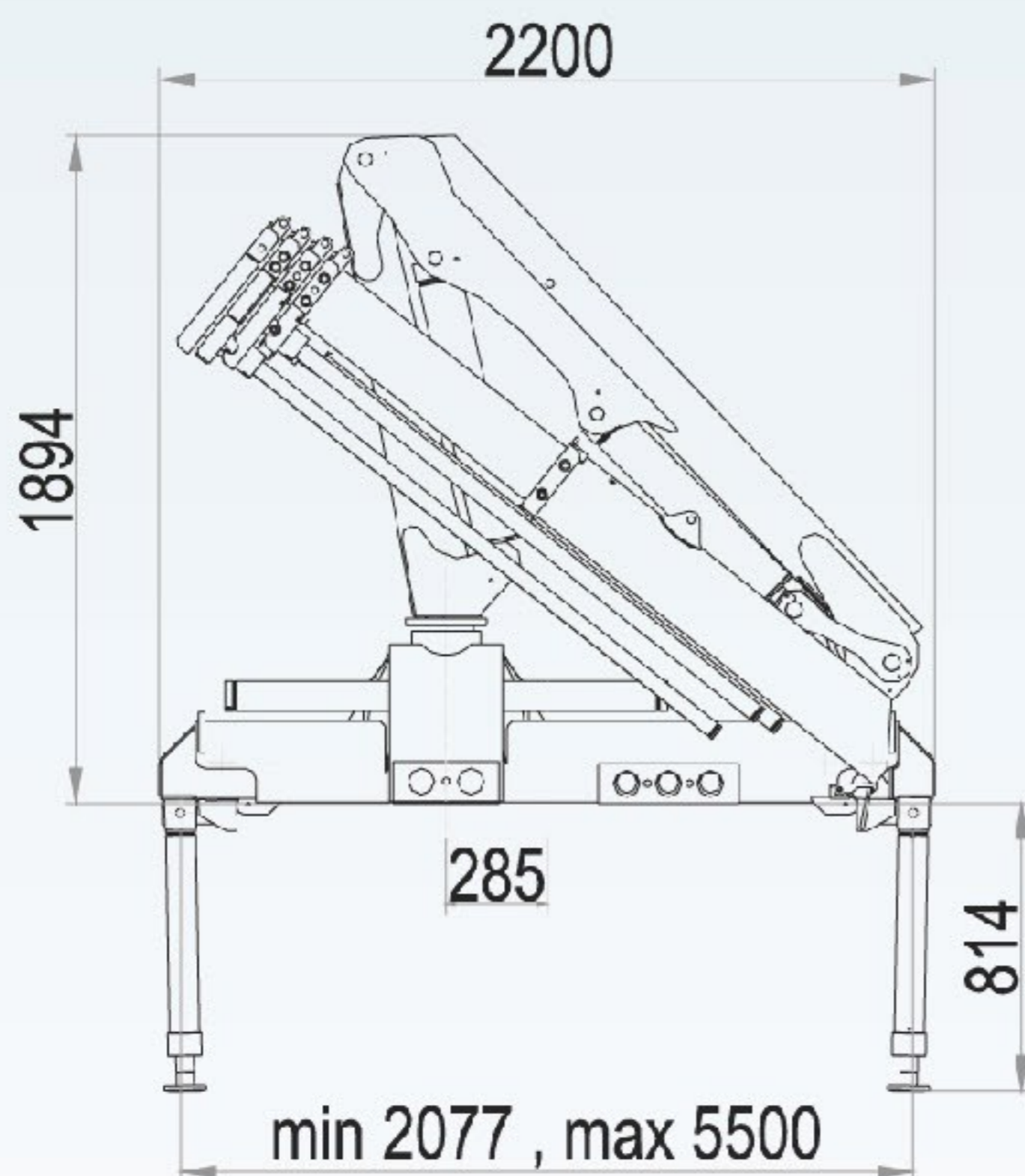
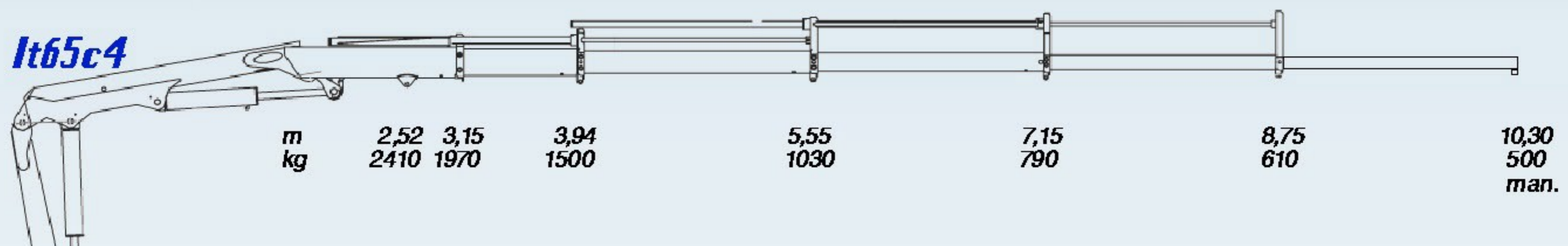
It65c2



It65c3



It65c4



Technische Daten

Fiche Technique

Caratteristiche Tecniche

Kranbau- Norm projecté selon les normes norma tecnica di progetto	DIN	15018 H2B3
Hubmoment capacité de levage capacità di sollevamento	daNm	6,4
Schwenkbereich angle de rotation angolo di rotazione	°	365
Schwenkmoment couple de rotation coppia di rotazione	daNm	1050
Betriebsdruck pression de travail pressione die esercizio	bar	280
Fördermenge debit au distributeur portata max al distributore	l/min	16-20
Tankinhalt cap. réservoir d'huile cap. serbatoio	l	30
Gewicht mit std Abstützung poids avec stabilisateurs peso con stabilizzatori	65c2 65c3 65c4	880 gew. 930 990
Gewichte inkl. Abstützung ohne Öl im Tank		